

Current Projects



Meena Glory



Meena Sparsh



Meena Wood



Meena Paradise



Meena Sangam



Meena Srishthi



Meena Icon



Meena Elegant



GM GROUP
always with you...

BA -17 Salt Lake City, sector-1,
Kolkata-700064. Near CA Park

Ph : 033 4603 3533

(M) : +91 8336087402 / 9830150306 /
8336087405 / 8336087404

Mail us at: gmab_9@rediffmail.com /
sales@gmgroup.co.in /

Sujit_spa@yahoo.co.in

Website : www.gmgroups.co.in

Turn your Dreams
into Real



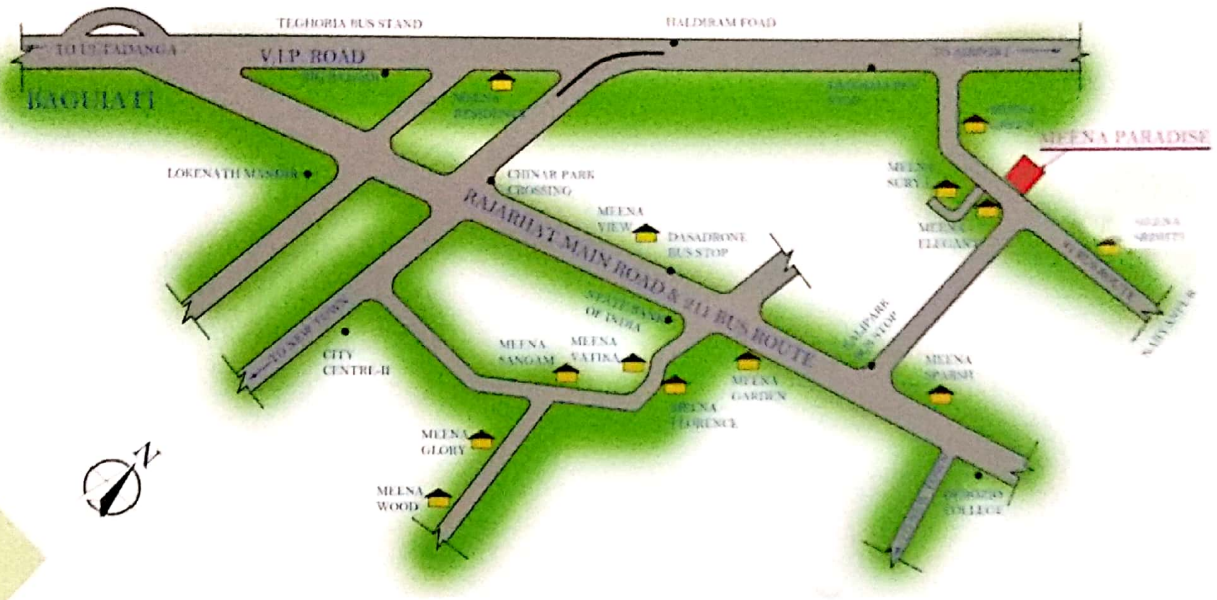
GM GROUP
always with you...



This brochure is not a legal document. It describes the conceptual planintent and purpose of the project and is subject to change

**Meena
Paradise**





Distance from Meena Paradise :

- 📍 Big Bazaar : 5 Minutes by drive away !
- 📍 Wipro : 10 Minutes by drive away !
- 📍 City Centre-II : 5 Minutes by drive away !
- 📍 Airport : 05 Minutes by drive away !

About Us

Over twenty five years ago a few enterprising men kindled the fire of progress and made excellence their commitment and growth their goal. Accomplishing this noble objective called for Indefatigable determination, fine tuned policies, dedicated manpower and world class technology to shape the future.

Real Estate Development

The principal activity of the GM Group is development of residential and commercial buildings. The Group is well known and recognized by the style and name of GM Group and has been at the helm of the real estate industry for over two decades. Projects span the major Metros and outskirts . The combined real estate value of the projects developed would run Into several million rupees, a substantial sum by any national or international standard.

Some of the major landmarks stand proud testimony to the development activities of the Group - Meena Residency, Meena Ganga, Meena Florence, Meena Green are just a few of them Prestigious completed residential projects In Kolkata are Madhu Apartments, Meena View, Meena Vatika and many more.

Ethically GM Group associates only reputed vendors who have proven track record. As a result buyers need not fear any compromisation on the quality of construction when they buy property from us.

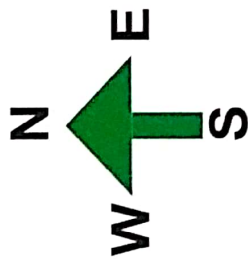
GM Group having a exceptional database & professional contacts assure a choice of properties to fit in the budget, in Kolkata & suburbs.



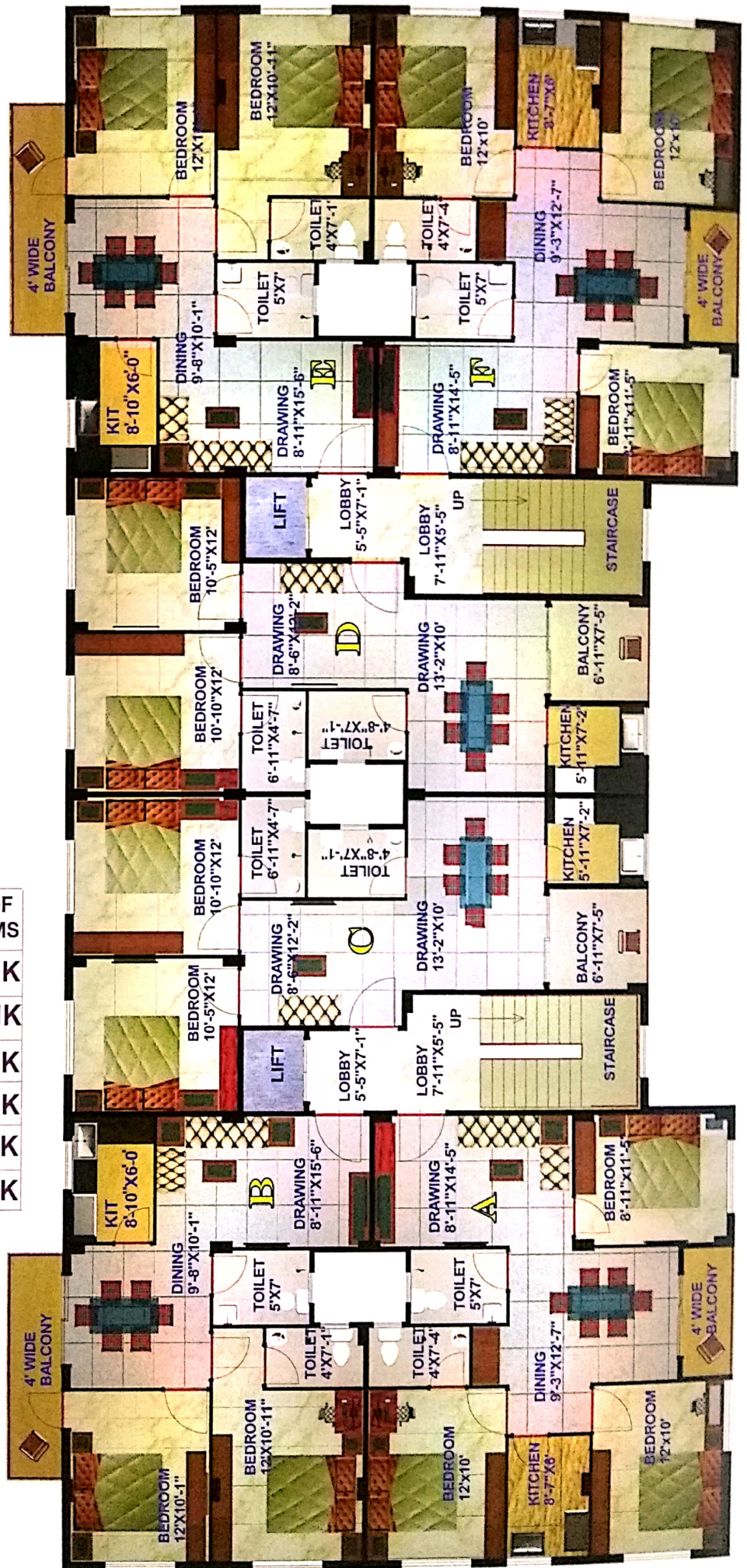
MASTER PLAN

MEENA PARADISE

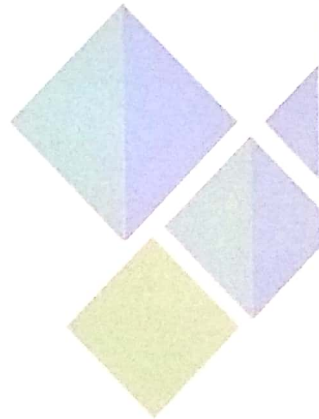
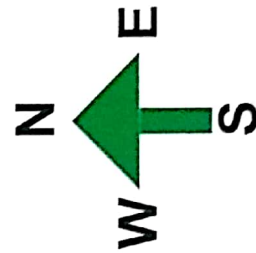
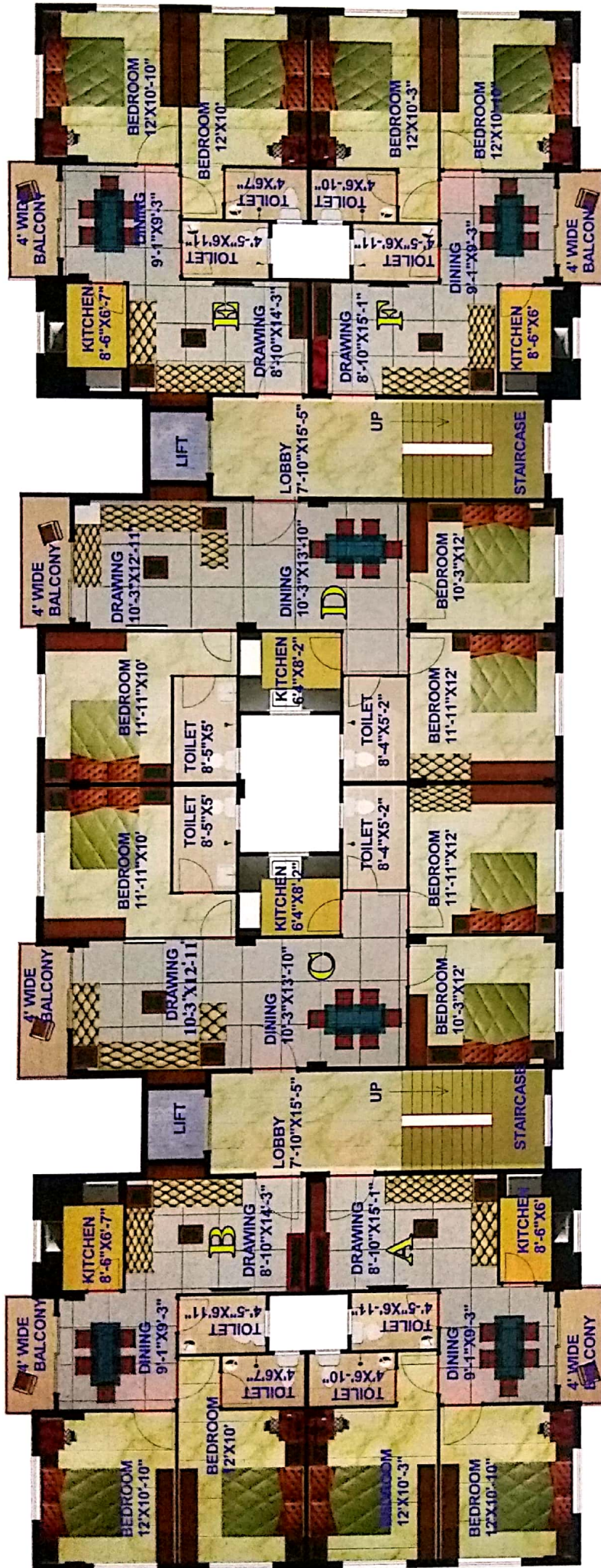
Typical Floor Plan, Block - A, Phase - I



| NAME OF THE FLAT | SUPER BUILT UP AREA(sft) | NO. OF ROOMS |
|------------------|--------------------------|--------------|
| A | 1160 | 3 BHK |
| B | 1020 | 2 BHK |
| C | 966 | 2 BHK |
| D | 966 | 2 BHK |
| E | 1020 | 2 BHK |
| F | 1160 | 3 BHK |

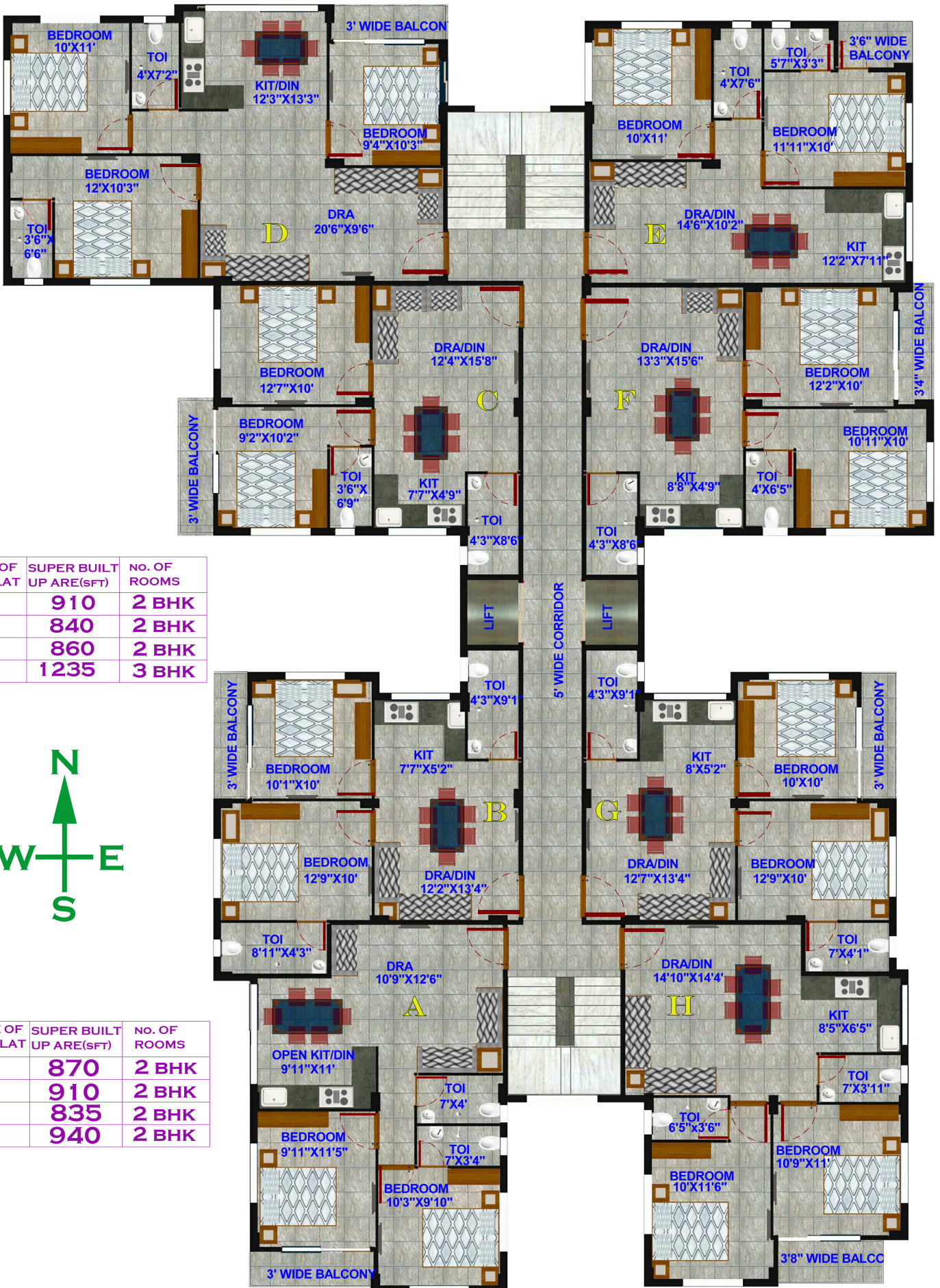


Typical Floor Plan, Block - B, Phase - I

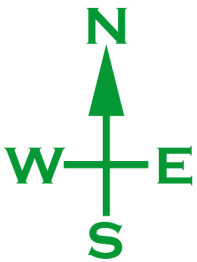


| NAME OF THE FLAT | SUPER BUILT UP AREA(sft) | NO. OF ROOMS |
|------------------|--------------------------|--------------|
| A | 965 | 2 BHK |
| B | 970 | 2 BHK |
| C | 1331 | 3 BHK |
| D | 1331 | 3 BHK |
| E | 970 | 2 BHK |
| F | 965 | 2 BHK |

TYPICAL FLOOR PLAN, BLOCK-A, PHASE-II



| NAME OF THE FLAT | SUPER BUILT UP ARE(SFT) | No. OF ROOMS |
|------------------|-------------------------|--------------|
| A | 910 | 2 BHK |
| B | 840 | 2 BHK |
| C | 860 | 2 BHK |
| D | 1235 | 3 BHK |

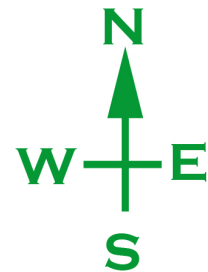


| NAME OF THE FLAT | SUPER BUILT UP ARE(SFT) | No. OF ROOMS |
|------------------|-------------------------|--------------|
| E | 870 | 2 BHK |
| F | 910 | 2 BHK |
| G | 835 | 2 BHK |
| H | 940 | 2 BHK |

TYPICAL FLOOR PLAN, BLOCK-B, PHASE-II



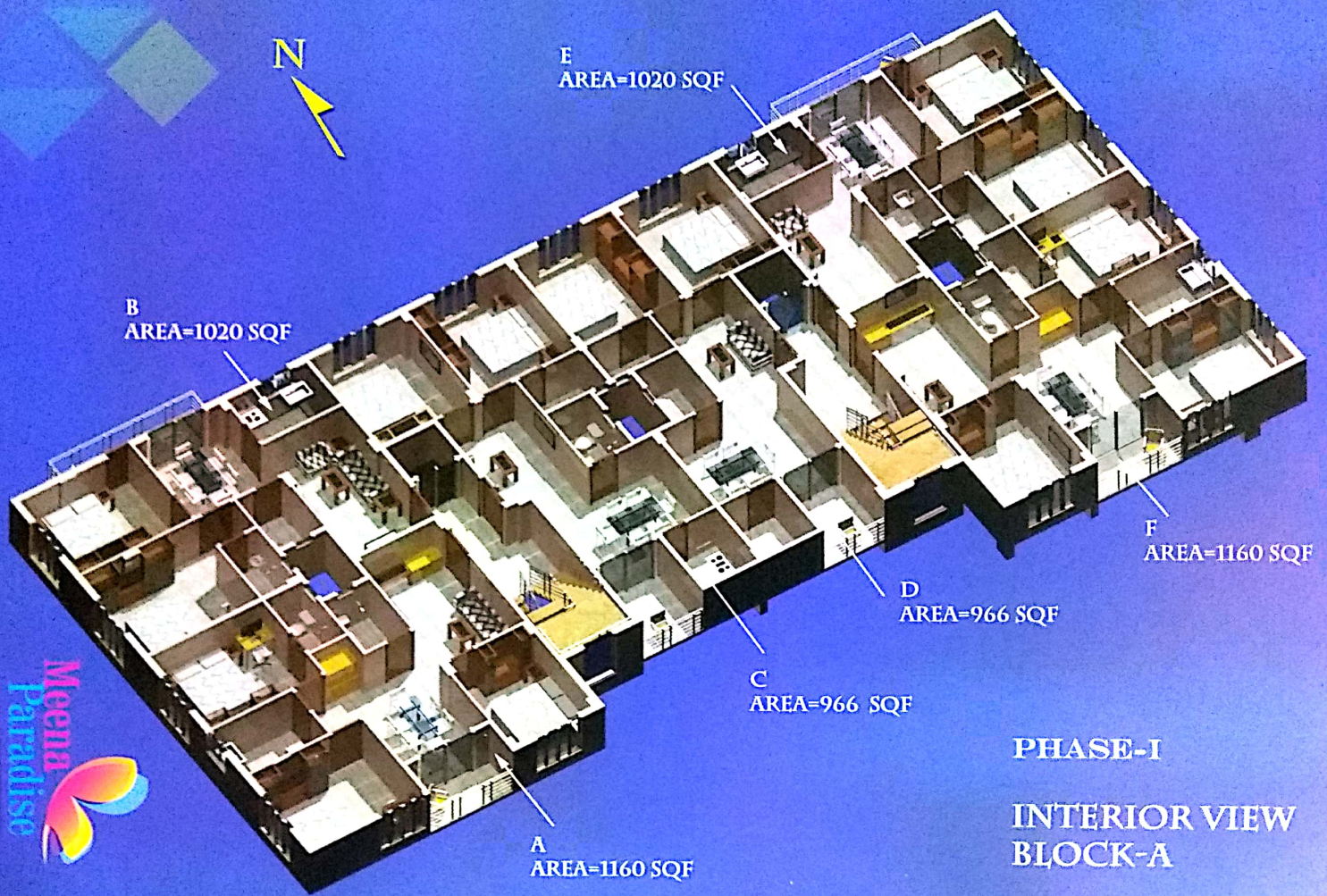
| NAME OF THE FLAT | SUPER BUILT UP ARE (sft) | NO. OF ROOMS |
|------------------|--------------------------|--------------|
| A | 945 | 2 BHK |
| B | 830 | 2 BHK |
| C | 895 | 2 BHK |
| D | 810 | 2 BHK |

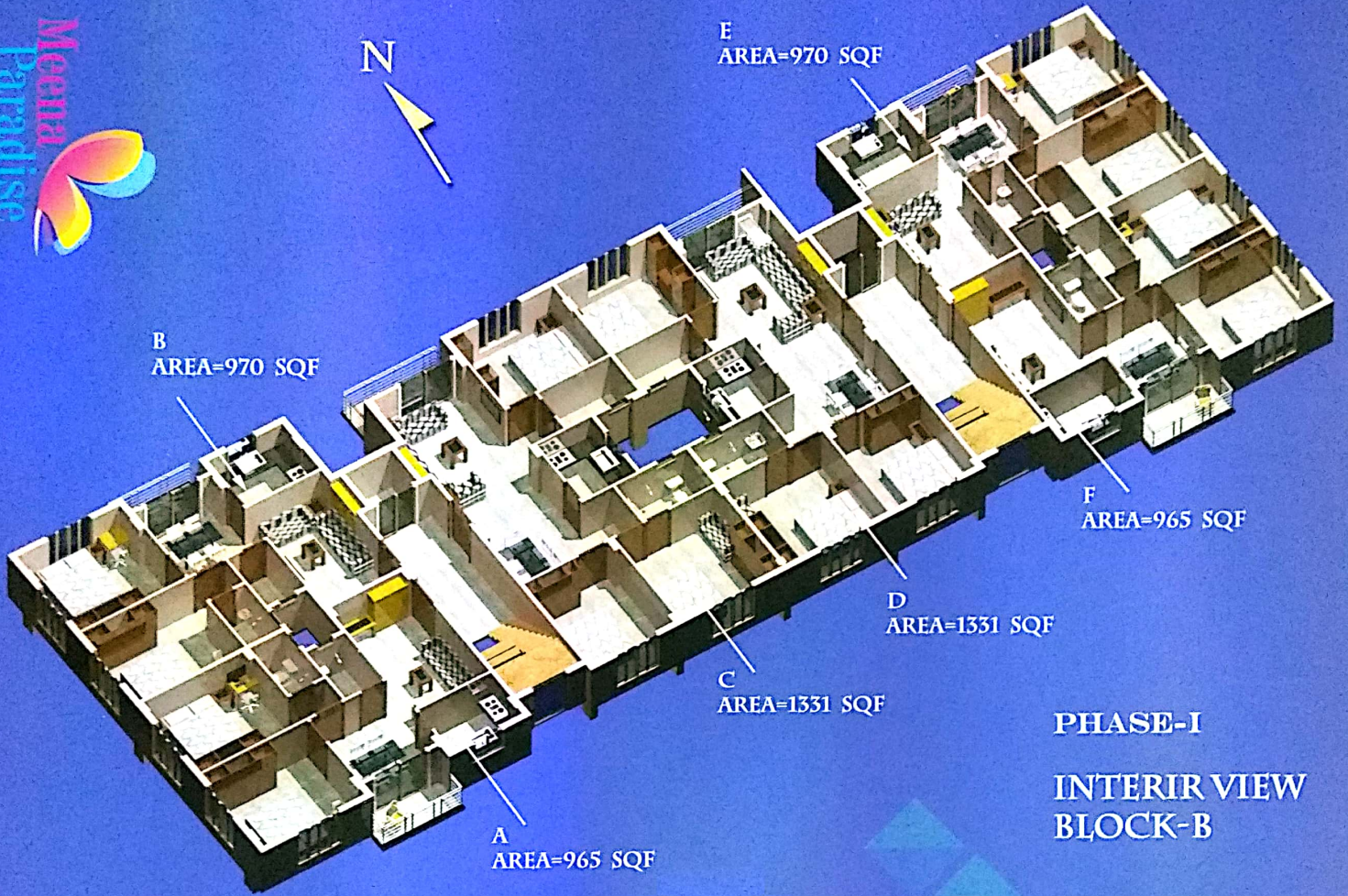


| NAME OF THE FLAT | SUPER BUILT UP ARE (sft) | NO. OF ROOMS |
|------------------|--------------------------|--------------|
| E | 1235 | 3 BHK |
| F | 860 | 2 BHK |
| G | 835 | 2 BHK |
| H | 910 | 2 BHK |

Meena
Paradise







PHASE-I
INTERIR VIEW
BLOCK-B

Building Specification

Structure

RCC Frame Structure

Elevation

A Unique blend of ornamental & modern Architecture

Exterior

Blending of Weather-proof paint & other decorative finish

Flooring

Quality Vitrified 2ft x 2ft flooring in living, dining, kitchen & all the bedrooms

Electricals

- Copper wiring of good make in concealed conduits
- MCB of Havells or equivalent
- Telephone, TV Cable point in living / dining
- Geyser point in both toilet
- Sufficient light & fan points
- Modular switches of good make

Lift

Lift of reputed make in each block

Water Supply

24 hrs uninterrupted supply from deep boring

Staircase & Lobby

Spacious staircase, elegant lobby and all floor corridors with marble

Kitchen

Black Granite top platform with stainless steel sink of repute make & glazed tiles upto 3ft above the platform

Toilet

- Anti skid tiles of good make in all the toilets
- Ceramic tiles of goodmake upto 60 inches
- Provision for hot & cold water supply in both toilets
- European style sanitary fittings of good make
- Elegant CP Fittings of Essco Or Equivalent

Windows

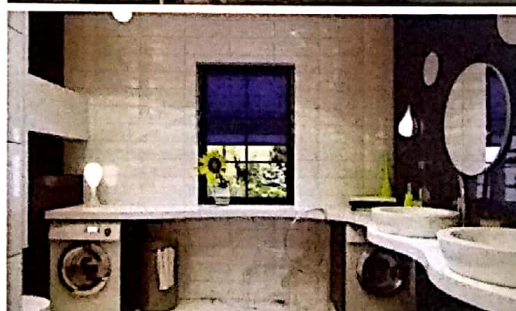
Anodized Aluminium Windows

Doors

Good quality white colour paint flush doors in all rooms

Amenities

- 🏡 Roof Top Garden
- 📞 Intercom Phone
- 🏠 Fully AC Community Hall
- 🎮 Games Room For Children
- 🏋️ Gymnasium
- 🕒 24 hrs Security
- 🔌 Power Backup





Projects Completed

- Meena Super Market
- Aradhana Apartment
- Kamal Apartment
- Jyoti Apartment
- Pooja Apartment
- Krishnakunj Apartment
- Radhakunj Apartment
- Pranati Apartment
- Maya Apartment
- Jaya Apartment
- Nilava Apartment
- Madhuban Apartment
- Mousumi Apartment
- Manisha Apartment
- Mayur Apartment
- Manashi Apartment
- Madhu Apartment
- Megha Enclave
- Bharatiya Enclave
- Meena Siddhi



- Meena Florence
- Meena Vatika
- Meena View
- Meena Garden
- Meena Residency
- Meena Ganga

Upcoming Projects

| | |
|--------------------|----------------------|
| Meena Sparsh | Rajarhat |
| Meena Orchid | Mahisbathan, Sec-V |
| Meena City | Airport |
| Meena Uddayan | Beliaghata |
| Meena Height | Agarpara (B.T. Road) |
| Meena Icon Sodepur | (B.T. Road) |

